

INSTRUCTIONS FOR THE MOBILE APP

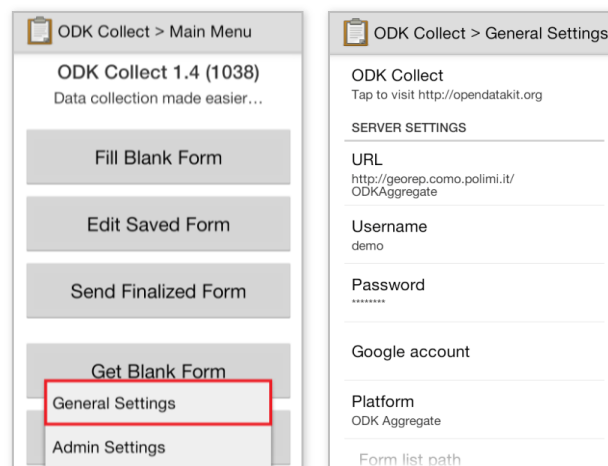
The following instructions allow to use **I Cammini della Regina** form.

Download from Google Play (<https://play.google.com>) the ODK Collect application and install it on an Android device.

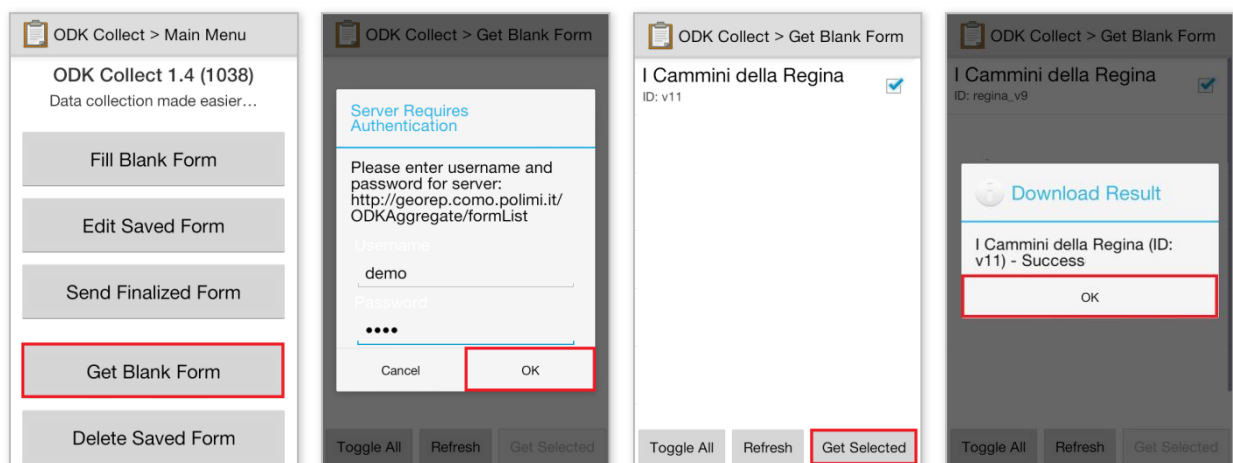


Open the application and press the device **Options** button. Select **General Settings** and, in the next menu, set the following options:

- **URL:** <http://georep.como.polimi.it/ODKAggregate>
- **Username:** demo
- **Password:** demo
- **Server Platform:** ODK Aggregate

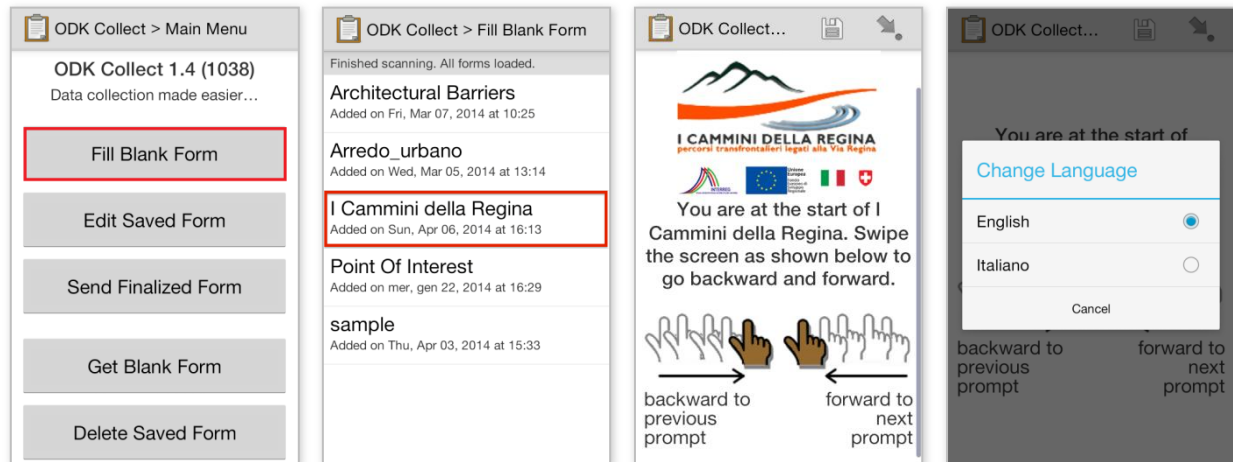


From the main page of the application, select **Get Blank Form** in order to connect to the server. Log in using the assigned username and password and press **OK**. In the next page, you can see the list of the form templates which are currently available on the server. Check the **I Cammini della Regina** one and press **Get Selected** in order to download the form on your device. A message will confirm the success of the operation, which requires an active Internet connection.



From the main page of the application, select now **Fill Blank Form**. In the next page, among the available form templates select **I Cammini della Regina**. In this way, you will access the starting page of the questionnaire for reporting **I Cammini della Regina** point of interest.

At any time during the questionnaire, it is possible to switch the language from/to English, Italian. To do so, press the device **Options** button and select **Change Language**, then choose your preferred language.

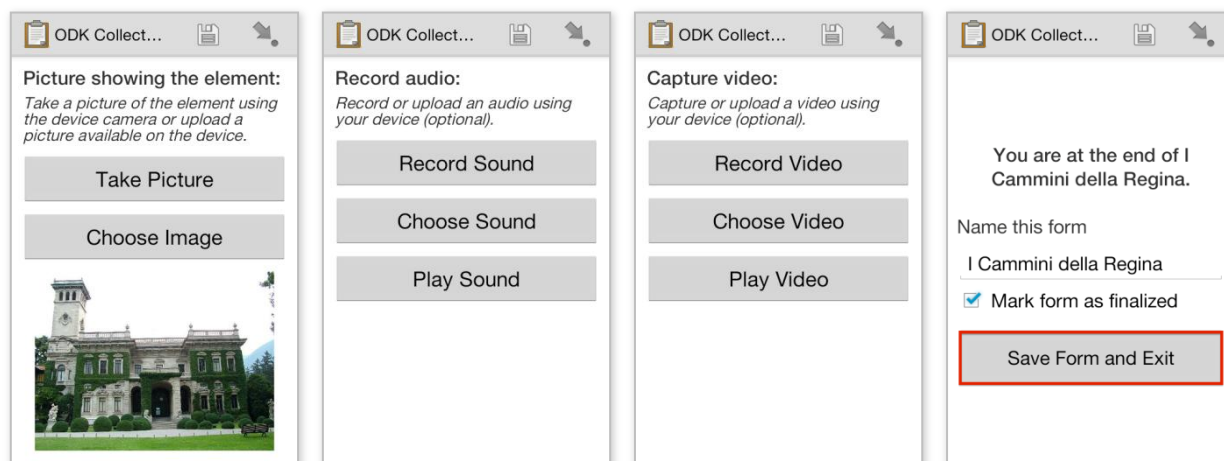


Provide answers to each step of the questionnaire, which also gives some instructions on how to deal with each specific request. Providing an answer is not mandatory for all the questions, a notice will indicate the mandatory responses.

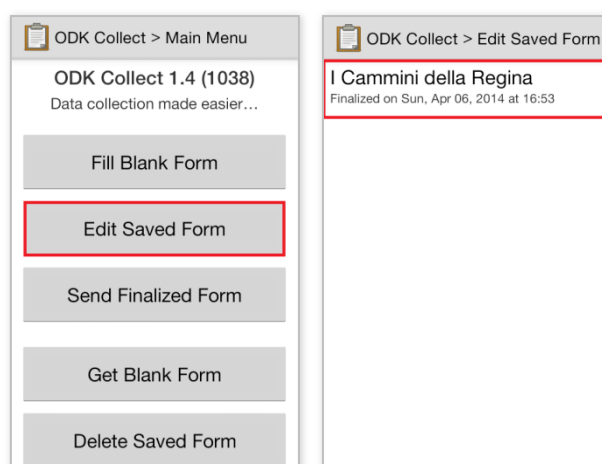
At the end of the questionnaire, give a name to your report and press **Save Form and Exit**. The questionnaire can be compiled also without an active Internet connection.

The image displays eight sequential screenshots of the ODK Collect application showing various questionnaire steps:

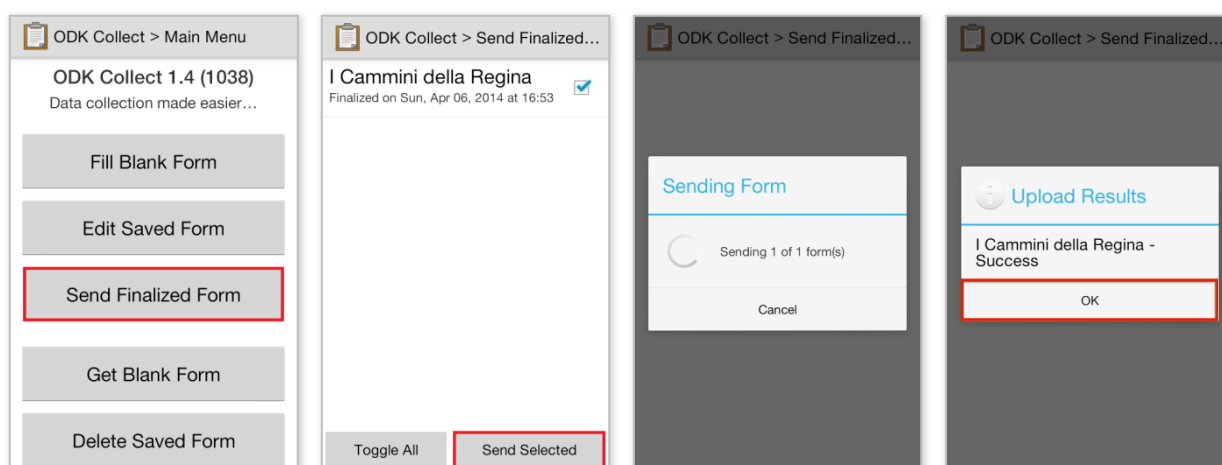
- Date of report:** A calendar view for April 2014. The date '6' is selected.
- Type of user:** A screen asking to specify the kind of user. Options include 'tourist from Italy' (selected), 'tourist from abroad', 'citizen of Como province', and 'citizen of Ticino Canton'.
- Type of element:** A screen asking to specify the kind of element. Options include 'historical and cultural element' (selected, with a castle icon), 'morphological element' (with a person icon), and 'religious building'.
- Classification of the element:** A screen asking to classify the element. Options include 'museum' (selected, with a museum icon) and 'religious building' (with a church icon).
- Subclassification of the element:** A screen asking to subclassify the element. Options include 'ethnographyc', 'thematic' (selected), 'gallery', and 'collections'.
- Name of the element:** A screen asking for the name of the element. The text 'Museum of Villa Erba' is entered.
- Description/comment:** A screen asking for a description or comment. The text 'The museum remembers Luchino Visconti that spent here many summer.' is entered.
- Position of the element:** A screen asking for the position of the element. It shows coordinates: Latitude: N 45°50'16", Longitude: E 9°4'39", Altitude: 0m, Accuracy: 5.5m. A 'Replace Location' button is also present.



The compiled questionnaire has now been saved, but still not be sent to the server. It is possible to further modify it, selecting **Edit Saved Form** from the main page of the application. Select then the saved form you wish to edit in order to access the previous questionnaire and modify your answers.



When you are satisfied about the answers to the questionnaire, you are ready to submit your report to the server. From the main page of the application, select **Send Finalized Form**. In the next page, select the finalized form you wish to submit and press **Send Selected**. This step requires an active Internet connection.



Submitted reports will be viewed on the following Web pages (recommended browsers are Firefox and Chrome):

- <http://viaregina.como.polimi.it/mapparty/>